

## ExxonMobil 2022 Worldwide Contributions and Community Investments

ExxonMobil's community investments are intended to address strategic local priorities where we do business around the world. We partner with governments, other companies and nongovernmental organizations to help support communities where we operate. We focus on community and business needs such as health care, education and economic development, and we consider each community's development goals when deciding how best to invest. We often participate in public-private partnerships and engage with key stakeholders to help improve social and economic conditions.

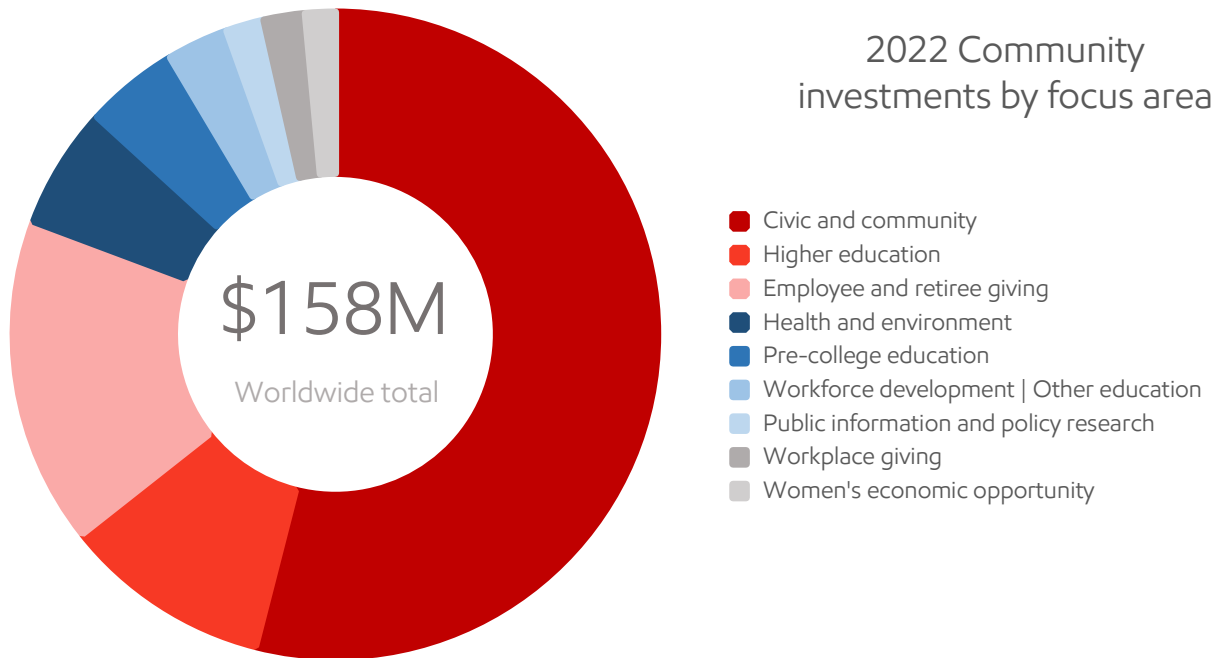
Total contributions include donations from Exxon Mobil Corporation, our divisions and affiliates, and the ExxonMobil Foundation, as well as employee and retiree giving through ExxonMobil's matching gift and employee-giving programs.

In 2022, collectively, Exxon Mobil Corporation, its divisions and affiliates, employees and retirees, and the ExxonMobil Foundation provided \$158 million in contributions and community investments worldwide. Of that total, \$41 million supported U.S. communities and \$91 million supported communities in other countries. In addition, ExxonMobil employees and retirees donated \$26 million through ExxonMobil's matching gift and employee-giving programs.

Our employees are involved in local communities by helping build homes, serving as volunteer firefighters and providing pro bono legal services, among numerous other activities. Through company-sponsored volunteer programs, 4,000 ExxonMobil employees, retirees and their families donated more than 250,000 volunteer hours in 2022 to over 2,000 charitable organizations across 20 countries.

This report highlights ExxonMobil's 2022 worldwide contributions and community investments. Organizations in the United States that received grants of \$100,000 or more are listed while investments outside the United States are summarized. The total amounts include all contributions and community investments less than, equal to and greater than \$100,000.

## 2022 Community investments by focus area



Total contributions include donations from Exxon Mobil Corporation, our divisions and affiliates, and the ExxonMobil Foundation, as well as employee and retiree giving through ExxonMobil's matching gift and employee-giving programs. Investments do not include environmental capital and operating expenditures.

**Civic and Community**

<b>Albuquerque International Balloon Fiesta, Albuquerque, N.M.</b>	
General support	350,000
<b>American Red Cross, Dallas, Texas</b>	
Disaster Relief	100,000
Ukraine Humanitarian Crisis Relief Fund	5,500,000
<b>Boys &amp; Girls Clubs of Greater Dallas, Inc., Dallas, Texas</b>	
General Support – Chairman’s Gift	100,000
<b>City of Beaumont, Beaumont, Texas</b>	
Restoration of Charlton-Pollard Park	100,000
<b>Direct Relief International, Santa Barbara, Calif. *</b>	
General Support	100,000
<b>ExxonMobil Volunteer Involvement Program*</b>	
ExxonMobil Volunteer Involvement Program	2,695,000
<b>Feeding America, Chicago, Ill. *</b>	
General support	100,000
<b>Santa Fe Community Foundation, Santa Fe, N.M.</b>	
Wildfire Relief Efforts in New Mexico	100,000
<b>Team Rubicon, El Segundo, Calif. *</b>	
General support	100,000
<b>Contributions Benefiting Communities in the United States</b>	<b>\$ 7,812,775</b>
<b>Contributions Benefiting Communities outside the United States</b>	<b>\$ 77,521,992</b>
<b>Exxon Mobil Corporation</b>	<b>\$ 82,030,767</b>
<b>ExxonMobil Foundation*</b>	<b>\$ 3,304,000</b>
<b>Total Worldwide Civic and Community Contributions</b>	<b>\$ 85,334,767</b>

## Education – Higher Education

### ExxonMobil Educational Matching Gift Program\*

Auburn University Foundation	187,699
Baylor University	173,475
Brigham Young University	155,405
Clemson University Foundation	141,121
Cornell University	114,105
Georgia Tech Foundation Inc.	185,416
Kansas University Endowment Association	143,559
Louisiana State University Foundation	264,073
Massachusetts Institute of Technology	174,596
Mississippi State University	166,280
Oklahoma State University	176,302
Pennsylvania State University	176,533
Purdue Foundation	132,400
Rice University	335,907
Texas A&M University	445,418
University of Florida Foundation	125,227
University of Houston Foundation	222,729
University of Illinois	100,171
University of Notre Dame	133,169
University of Oklahoma	134,509
University of Tennessee Foundation	100,793
University of Texas at Austin	509,373
631 other colleges and universities, each under \$100,000	<u>6,839,021</u>
<b>Subtotal</b>	<b>\$ 11,137,281</b>

### Departmental Grants

50 colleges and universities, each under \$100,000	398,000
<b>Hispanic Heritage Awards Foundation, Washington, D.C.</b>	
Awards and Latinos On Fast Track	100,000
<b>Lee College, Baytown, Texas</b>	
Student Success Initiative	100,000
<b>National Action Council for Minorities in Engineering, Alexandria, Va. *</b>	
General support	100,000
<b>National Engineers Week Foundation, Alexandria, Va.</b>	
National Engineering Week	100,000
<b>Society of Women Engineers, Chicago, Ill. *</b>	
Engineering outreach	100,000
<b>Southeastern Consortium for Minorities in Engineering, Atlanta, Ga. *</b>	
SECME Consortium	100,000

<b>Contributions Benefiting Communities in the United States</b>	<b>\$ 15,762,931</b>
<b>Contributions Benefiting Communities outside the United States</b>	<b>\$ 649,881</b>

<b>Exxon Mobil Corporation</b>	<b>\$ 5,075,531</b>
<b>ExxonMobil Foundation*</b>	<b>\$ 11,337,281</b>

<b>Total Worldwide Higher Education Contributions</b>	<b>\$ 16,412,812</b>
---	----------------------

**Education – Pre-college**

<b>Hispanic Scholarship Fund, Gardena, Calif.</b>	
STEM Summit	100,000
<b>National Math and Science Initiative Inc., Dallas, Texas</b>	
College Readiness Program expansion (\$185 million: 2007-2024)	4,000,000
<b>Rice University, Houston, Texas</b>	
Tapia Center: STEM camps	100,000
<b>Teach for All, New York, N.Y. *</b>	
International STEM Network	150,000
<b>Contributions Benefiting Communities in the United States</b>	<b>\$ 6,334,150</b>
<b>Contributions Benefiting Communities outside the United States</b>	<b>\$ 1,044,845</b>
<b>Exxon Mobil Corporation</b>	<b>\$ 7,045,995</b>
<b>ExxonMobil Foundation*</b>	<b>\$ 333,000</b>
<b>Total Worldwide Pre-College Contributions</b>	<b>\$ 7,378,995</b>

## Education – Workforce Development/Other

With its grants, ExxonMobil supports programs to prepare workers for successful careers with local industrial employers. In 2022, ExxonMobil made no individual charitable workforce development grants above \$100,000 to organizations based in the United States.

<b>Contributions Benefiting Communities outside the United States</b>	<b>\$ 4,879,238</b>
<b>Exxon Mobil Corporation</b>	<b>\$ 4,879,238</b>
<b>ExxonMobil Foundation*</b>	
<b>Total Worldwide Workforce Development Contributions</b>	<b>\$ 4,879,238</b>

## Health and Environment

<b>Battelle – Northwest, Seattle, Wash.</b>	
Global Technology Strategy Program	170,000
<b>Coastal Conservation Association of Louisiana, Baton Rouge, La.</b>	
Global Technology Strategy Program	100,000
<b>Ducks Unlimited, Inc., Memphis, Tenn.</b>	
Bayou Chene Restoration Project	250,000
<b>Friends of PanAfricare, Washington, D.C. *</b>	
Malaria - Community Based Intervention	175,000
Malaria - Core Angola Community Program	175,000
Malaria - Power Forward: NBA Partnership in Nigeria	500,000
<b>Grassroot Soccer, Hanover, N.H. *</b>	
Malaria - Prevention & Sports Curriculum	600,000
<b>Harvard TH Chan School of Public Health*, Boston, Mass. *</b>	
Harvard Malaria Initiative	100,000
ExxonMobil Malaria Scholar-in-Residence Program	200,000
<b>International Conservation Caucus Foundation, Washington, D.C.</b>	
General support	100,000
<b>Massachusetts Institute of Technology, Cambridge, Mass.</b>	
Joint Program on the Science and Policy of Global Change	200,000
<b>National Safety Council, Itasca, Ill.</b>	
Robert W. Campbell Award	100,000
<b>Population Services International, Washington, D.C.*</b>	
Malaria - Prevention Through Sports	100,000
<b>Texas State Aquarium Association, Corpus Christi, Texas *</b>	
Center for Wildlife Rescue, Recovery & Research	500,000
<b>United States Agency for International Development, Washington, D.C. *</b>	
Born Free to Shine Initiative	100,000
<b>Contributions Benefiting Communities in the United States</b>	<b>\$ 3,401,197</b>
<b>Contributions Benefiting Communities outside the United States</b>	<b>\$ 6,205,127</b>
<b>Exxon Mobil Corporation</b>	<b>\$ 4,891,324</b>
<b>ExxonMobil Foundation*</b>	<b>\$ 4,715,000</b>
<b>Total Worldwide Health and Environment Contributions</b>	<b>\$ 9,606,324</b>

**Public Information and Policy Research**

<b>American Enterprise Institute for Public Policy Research, Washington, D.C.</b>	
General support	150,000
<b>Bipartisan Policy Center, Inc., Washington, D.C.</b>	
General support	120,000
<b>Brookings Institution, Washington, D.C.</b>	
Corporate Council and Foreign Policy Program	100,000
<b>Center for Strategic and International Studies, Washington, D.C.</b>	
General support	175,000
<b>Colorado School of Mines Foundation Inc, Golden, Colo.</b>	
Center on Global Energy Policy	125,000
<b>Columbia University, New York, N.Y.</b>	
Center on Global Energy Policy	250,000
<b>Congressional Black Caucus Foundation, Inc., Washington, D.C.</b>	
General support	100,000
<b>Council on Foreign Relations, New York, N.Y.</b>	
Corporate program	100,000
<b>Future 500, San Francisco, Calif.</b>	
Energy Solutions Program	100,000
<b>George Washington University, Washington, D.C.</b>	
Regulatory Studies Center	150,000
<b>Massachusetts Institute of Technology, Cambridge, Mass.</b>	
Energy Policy Studies	100,000
<b>Tax Foundation, Washington, D.C.</b>	
Research Project Support	100,000
<b>Texas 2036, Dallas, Texas</b>	
General support	100,000
<b>Contributions Benefiting Communities in the United States</b>	<b>\$ 2,996,200</b>
<b>Contributions Benefiting Communities outside the United States</b>	<b>\$ 20,900</b>
<b>Exxon Mobil Corporation</b>	<b>\$ 3,017,100</b>
<b>ExxonMobil Foundation*</b>	
<b>Total Worldwide Public Policy Contributions</b>	<b>\$ 3,017,100</b>



## Workplace Giving

### Local United Way Campaigns – Company and Foundation Contributions

Beaumont & North Jefferson County, Beaumont, Texas*	144,000
Greater Baytown Area & Chambers County, Baytown, Texas*	261,000
Greater Houston, Houston, Texas*	1,300,000
Greater Houston, Houston, Texas	100,000
Greater Houston, Houston, Texas	200,000

### America’s Charities/Employees’ Favorite Charities Campaign – Foundation Contributions

Dallas, Texas*	400,000
----------------	---------

**Contributions Benefiting Communities in the United States** **\$ 2,930,000**

**Contributions Benefiting Communities outside the United States** **\$ 341,500**

**Exxon Mobil Corporation** **\$ 798,000**

**ExxonMobil Foundation\*** **\$ 2,473,500**

**Total Worldwide Workplace Giving Contributions** **\$ 3,271,500**

## Women's Economic Opportunity Initiative

<b>Counterpart International, Arlington, Va. *</b>	
Global Women in Management program	500,000
<b>Kopernik Solutions, New York, N.Y. *</b>	
Women's Distribution Network	300,000
<b>Solar Sister, Great Falls, Va. *</b>	
General support	200,000
<b>TechnoServe, Arlington, Va. *</b>	
Access to Markets Initiatives	300,000
<b>WEConnect International, Washington, D.C.</b>	
Women-owned Enterprises Program	250,000
<b>Contributions Benefiting Communities in the United States</b>	
<b>Contributions Benefiting Communities outside the United States</b>	<b>\$ 2,350,000</b>
<b>Exxon Mobil Corporation</b>	<b>\$ 450,000</b>
<b>ExxonMobil Foundation*</b>	<b>\$ 1,900,000</b>
<b>Total Worldwide Women's Economic Opportunity Contributions</b>	<b>\$ 2,350,000</b>

Individual line items have been rounded with the exception of the matching gift programs. May include cash and in-kind contributions to nonprofit and nongovernmental organizations; direct spending on community-serving projects; social bonus projects required under agreements with host governments by Exxon Mobil Corporation, its divisions and affiliates; and ExxonMobil's share of community expenditures paid by joint ventures operated by other companies.

Line items reflect gross amount contributed; subtotals and totals reflect net giving amounts.

All grants made by Exxon Mobil Corporation, its divisions and affiliates except those indicated by \*, which were made by the ExxonMobil Foundation.